

#### GENERAL DESCRIPTION

- EXISTING CHILLED WATER S&R, CONDENSATE DRAIN, & HOT WATER S&R RISERS TO REMAIN
- REMOVE EXISTING HOT WATER, CHILLED WATER & CONDENSATE RISER BRANCH PIPING INSULATION. REINSULATE CHILLED WATER SUPPLY & RETURN, AND CONDENSATE DRAIN WITH NEW  $\frac{1}{2}$ " THICK CLOSED CELL FOAM, REINSULATE HOT WATER SUPPLY & RETURN RISERS WITH  $\frac{1}{2}$ " FIBERGLASS.
- NOT USED.
- DRAIN PAN CONNECTION WITH  $\frac{3}{4}$ " S.S. HOSE CLAMP.
- S.S. CONDENSATE PAN.
- THERMOSTAT AND JUNCTION BOX (MOUNT APPROXIMATELY 60" A.F.F.) & WIRE TO UNIT CONTROLS
- COOLING & HEATING COIL
- CENTRIFUGAL BLOWER AND HOUSING
- DISPOSABLE FIBER GLASS FILTER
- RETURN AIR GRILLE & ACCESS PANEL WITH MOUNTING FRAME - SECURE TIGHT TO DRYWALL ENCLOSURE
- FAN MOTOR
- SUPPLY AIR GRILLE (SEE SCHEDULE BELOW FOR SIZE)
- ELECTRICAL JUNCTION BOX - RELOCATE TO ACCOMMODATE NEW FAN COIL INSTALLATION OR INCORPORATE IN DUCT COLLAR
- QUICK DISCONNECT
- MOTORIZED CONTROL VALVE
- FLOW BALANCING VALVE & CAPPED HOSE BIB DRAIN
- 2" X 2" X  $\frac{3}{4}$ " NEOPRENE ISOLATOR PADS. MOUNT UNIT & SHIM FOR PLUM & LEVEL INSTALLATION.
- $\frac{1}{2}$ " ACOUSTICAL INSULATION
- DRIP PAN WITH OVERFLOW SWITCH - WIRED TO SHUTDOWN UNIT
- AIR FILTER TRACK
- EXISTING CPVC DRAIN RISER. TYPICAL  $\frac{3}{4}$ " T-CONNECTION
- CUT PIPING PENETRATION IN FAN COIL ENCLOSURE. PROVIDE NEOPRENE GROMMET IN PIPING PENETRATION & SILICONE CAULK PIPING.
- NEW  $\frac{3}{4}$ " CPVC COUPLING WITH NPT THREADS
- GALVANIZED STEEL DUCT COLLAR - SECURE AND CAULK TO FAN COIL PLENUM (LENGTH & SIZE - AS REQUIRED)
- INSULATE ALL CHILLED WATER PIPING INCLUDING VALVES, FITTINGS & HOSES WITH  $\frac{1}{2}$ " CLOSED CELL FOAM INSULATION.
- $\frac{3}{4}$ " SPIRAL S.S. HOSE CLAMP AND BARBED HOSE CONNECTOR FITTING
- PATCH GYPSUM WALL BOARD MATCH EXISTING THICKNESS, SPACKLE, TAPE & PRIME PAINT
- REMOVE (E) VALVES AND CAP RISER CONNECTIONS. COORDINATE SHUTDOWN WITH MANAGEMENT.
- PROVIDE NEW  $1\frac{1}{2}$ " "T DRILL" BRAZED RISER TAPS WITH NEW ISOLATION, BALL VALVES SWEAT TYPE WITH SOLDER JOINT-BRANCH PIPES SHALL BE  $\frac{1}{2}$ " $\phi$ , TYPE L COPPER (TYPICAL FOR (4) - CHWS, CHWR, HWS, HWR. FIELD VERIFY LOCATION LEFT, RIGHT, BACK, TOP & MODIFY ARRANGEMENT TO SUIT.)
- DISCHARGE PLENUM
- MINERAL WOOL INSULATION, REPACK MINERAL WOOL & INSTALL FIRE STOPPING TO PROVIDE A 2 HOUR FIRE RATING FOR ALL RISERS AT FLOOR AND CEILING SLAB.
- NOT USED.
- MANUAL AIR VENT (TYPICAL)
- SHEET METAL COLLAR - SECURE FAN COIL RETURN AND SEAL WALL OPENING TO PERMIT DIRECT AIR RETURN TO UNIT.
- FLASH PATCH CONCRETE SLAB TO FILL VOIDS & GAPS AROUND CONDUIT PENETRATION.
- $\frac{1}{2}$ " COIL CONNECTION WITH MOTORIZED VALVE.
- VACUUM ALL DUST, DIRT & CONSTRUCTION DEBRIS FROM FAN COIL & DRYWALL ENCLOSURE.
- $\frac{3}{4}$ " $\phi$  CLEAR PLASTIC CONDENSATE DRAIN TUBING.
- EXISTING SLAB.
- MIN 4" HIGH STEEL ANGLE FLOOR STAND.
- CONTROL CABINET.
- $\frac{1}{2}$ " $\phi$ ,  $1\frac{1}{2}$ " TURN 12" DIAMETER COIL EXPANSION LOOP WITH SOLDER JOINTS (TYPICAL FOR (4) - CHWS, CHWR, HWS & HWR). FIELD COORDINATE LOCATION WITH EXISTING RISERS ALL PIPING, FITTINGS & VALVES AND FAN COIL CONNECTION LOCATION. INSULATE WITH  $\frac{1}{2}$ " THICK ARMAFLEX INSULATION.
- FAN COIL PIPING CONNECTION LOCATION FOR CHWS, CHWR, HWS & HWR - ON TOP OF UNIT,  $\frac{1}{2}$ " $\phi$ .
- PIPING TO FAN COIL HEATING & COOLING COIL -(COOLING COIL SHOWN - HEATING COIL SIMILAR).
- INTERNAL PIPING TO COILS FROM TOP OF UNIT -  $\frac{1}{2}$ " ANNEALED TYPE L COPPER WITH  $\frac{1}{2}$ " ARMAFLEX INSULATION WITHIN UNIT TERMINATE IN FEMALE SWEAT CONNECTION AT TOP OF UNIT.
- 12"x12" INSULATED HINGED ACCESS PANEL FOR ACCESS TO RISER SHUT OFF VALVES.

REFER TO TYPE-WRITTEN SPECIFICATIONS FOR ADDITIONAL REQUIREMENTS.

CONTRACTOR TO VERIFY ALL FIELD DIMENSIONS PRIOR TO ORDERING UNITS.

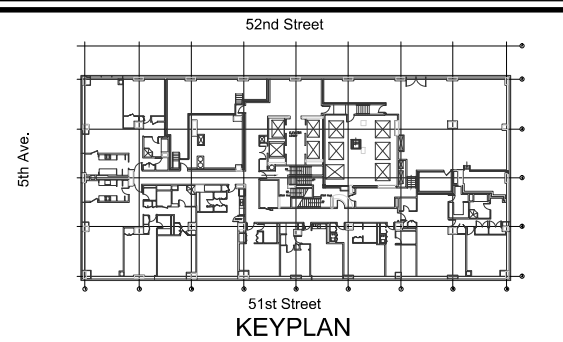
SUPPLY AIR GRILLE SCHEDULE BASIS OF DESIGN: TITUS-TYPE 300 FS		
CFM	DUCT/GRILLE SIZE	MAX NC LEVEL
200	16x6	8
300	16x8	12
400	16x10	11
600	16x12	18
800	16x14	20

THIS PLAN IS APPROVED ONLY FOR WORK INDICATED ON THE APPLICATION SPECIFICATION SHEET. ALL OTHER MATTERS SHOWN ARE NOT TO BE RELIED UPON, OR TO BE CONSIDERED AS EITHER BEING APPROVED OR IN ACCORDANCE WITH APPLICABLE CODES.

## Lilker Associates

1001 Avenue of the Americas  
New York, NY 10018  
tel 212.695.1000  
fax 212.695.1299  
www.lilker.com

**Lilker**



1	REVISED FOR DRAW THRU F.C.	1/16/2019	VR
NO.	ISSUE/REVISION	DATE	BY

PROJECT #:	O2050M
DATE:	10-10-2007
SCALE:	N.T.S.
DESIGNED BY:	
DRAWN BY:	AL
REVIEWED BY:	VR
APPROVED BY:	

PROJECT TITLE:

**OLYMPIC TOWER  
FAN COIL  
REPLACEMENT**

DRAWING TITLE:

**VERTICAL FAN COIL  
UNIT ELEVATION DETAIL**

DRAWING NO.

**M-6**